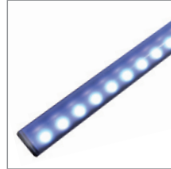


USER MANUAL

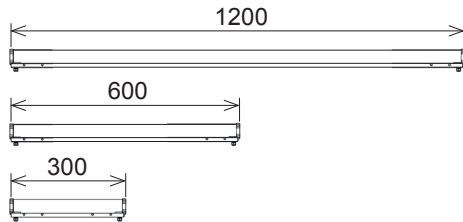
LL ARC MINI LINE RGB/RGBW/RGBAW

LL40 200 LL40 210 LL40 220 LL40 230
LL40 240 LL40 250 LL40 260 LL40 270
LL40 280



COMPLIMENTS ON YOUR PURCHASE!

All dimensions are in millimeters



Following items are included:

- LL ARC MINI LINE with 5m cable and 6pin LINE connector 1 pc.
- LL BRACKET MINI LINE FIX 1 pc.
- User manual 1 pc.

Additional items needed:

- LL ARC DRIVER
- DC power supply 24V
- Controller compatible with DMX
- Mounting accessories (adjustable bracket)
- Screws and washers M6

Content:

01 SAFETY INFORMATION

- 01.1 Risk of eyes damage
- 01.2 Protection from electric shock
- 01.3 Fire prevention

02 PRODUCT SPECIFICATION

- 02.1 Technical Specification

03 INSTALLATION

- 03.1 Unpacking
- 03.2 Physical installation
- 03.3 Electrical installation
 - 03.3.1 Connecting to AC/DC power supply
 - 03.3.2 Connecting to LL ARC DRIVER for intensity/colour control

04 MAINTENANCE

ENVIRONMENT



Do not throw away the appliance with the normal household waste at the end of its life, but hand it in at an official collection point for recycling. By doing this, you help to preserve the environment.

01 SAFETY INFORMATION



WARNING!!!

Carefully read before installing, powering or servicing.
Nothing to do if anything misunderstand! Installation can be done only by a qualified professional in accordance with relevant local codes.

01.1 Risk of eyes damage

- Do not look directly into LED lamps.
- Do not look into light beam from a distance of less than 40 cm (16 inches)!



01.2 Protection from electric shock

- Shut down power before installation or maintenance.
- Luminaries, Driver and recommended power supply must be installed by a qualified professional in accordance with relevant local codes. Only acceptable source of power and frequency that complies with local building and electrical codes to use.
- Do not use or do not connect the products if the power cable, power plug or fixtures are any way damaged, wet, or if they are overheating.
- Do not modify, alter, or attempt to service the LeaderLight appliance. Doing so will void the warranty.
- Before removing or installing any cover or part of appliance disconnect from power.



Operation only with DC 24V source! By using a high voltage AC power supply-danger of electric shock!

01.3 Fire prevention

- Follow all safety consideration.
- Thermostatic switches or fuses never to bypass.
- Device never shield – minimum distance around fitting must be 50mm (2 in.).
- LEDs never direct cover with filters or other materials.
- Allowing max. ambient temperature is 40°C (104°F).



02 PRODUCT SPECIFICATION

02.1 Technical Specification

Lamp type:	1200mm: 48 x TOP LED * 600mm: 24 x TOP LED * 300mm: 12 x TOP LED *
Lifetime:	Long 100 000 hrs 60% degradation
View Angle:	120°
Control data Input:	3/4/5 channels 24V dimming
Power input:	1200mm: max. RGB 12W/ RGBW 16W/ RGBAW 20W 600mm: max. RGB 6W/ RGBW 16W/ RGBAW 10W 300mm: max. RGB 3W/ RGBW 4W/ RGBAW 5W
Power connection:	24V DC 5m cable with 6pin LINE connector
Net weight:	1200/600/300mm: 1kg/ 0,6kg/ 0,3kg
Dimensions LxΦ:	1200/600/300mm x 38mm without bracket
IP:	IP20
Ambient temp. (Ta):	Maximum 40°C
Cooling:	Conventional
Materials and finish:	End cups: plastic Cover: frosted PMMA
Installation:	Surface mounting

*TOP LED: ■ R-Red, ■ G-Green, ■ B-Blue, ■ A-Amber, W-White (6300°K)

03 INSTALLATION

03.1 Unpacking

- Unpack carefully.
- This is electronic equipment and should be handled carefully.
- Damaged delivered package or if any mechanical parts broken – it must be claim immediately by the transport company. Photo pictures as evidence are valuable for future claim.

03.2 Physical installation

- Loading capacity of bearing area has to be at least 10 times the weight of all device clusters (luminaries, clamps, cables, ...).
- Hairbreadth from combustible materials is 0,5m.

03.3 Electrical installation


- **To tackle all Safety Information- 01!**
- You can suffer a dangerous electric shock by using a high voltage AC/DC power supply - by touching the AC/DC power supply wires inside LL ARC MINI LINE!
- LL ARC MINI LINE can be operated in two ways:
 - 03.3.1 LL ARC MINI LINE connecting to DC POWER SUPPLY - for switch ON/OFF luminaries
 - 03.3.2 LL ARC MINI LINE connecting to LL ARC DRIVER - for intensity and colour control



03.3.1 Connecting to DC power supply (Figure Nr. 1.1)

- LL ARC MINI LINE must be connected to the device- MW power supply IN:100-260AC/ OUT: 24V.
- It is not necessary to open fixture before connecting to MW power supply.

AC Power Supply Cord plug connections to MW Power supply:

Symbol	Pin	Wire Colour	Screw (US)
L	live	brown	yellow or brass
N	neutral	blue	silver
	ground (earth)	yellow/green	green

03.3.2 Connecting to LL LED DRIVER (Figure Nr. 1.2)

- For intensity and colour control is necessary connection with LL ARC DRIVER.
- It is not necessary to open fixture before connecting to LL ARC DRIVER.
- Before installing of LL ARC DRIVER carefully read USER MANUAL for LL ARC DRIVER.

Order code	Product name	I _c (A)
LL40 200	LL ARC MINI LINE RGB 300 *	3x0,04A
LL40 210	LL ARC MINI LINE RGB 600 *	3x0,08A
LL40 220	LL ARC MINI LINE RGB 1200 *	3x0,16A
LL40 230	LL ARC MINI LINE RGBW 300 *	4x0,04A
LL40 240	LL ARC MINI LINE RGBW 600 *	4x0,08A
LL40 250	LL ARC MINI LINE RGBW 1200 *	4x0,16A
LL40 260	LL ARC MINI LINE RGBAW 300 *	5x0,04A
LL40 270	LL ARC MINI LINE RGBAW 600 *	5x0,08A
LL40 280	LL ARC MINI LINE RGBAW 1200 *	5x0,16A

Accessories

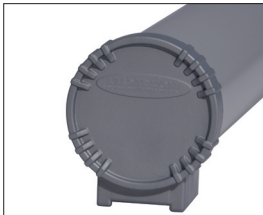
LL41 170	LL BRACKET ARC MINI LINE 300 ADJUSTABLE
LL41 171	LL BRACKET ARC MINI LINE 600/1200 ADJUSTABLE
LL41 150	LL BRACKET ARC MINI LINE FIX

Note: *One module 150 mm (6x RGB/RGB+W/RGB+A+W TOP LEDs 25mm POINT distance)

MOUNTING ACCESSORIES



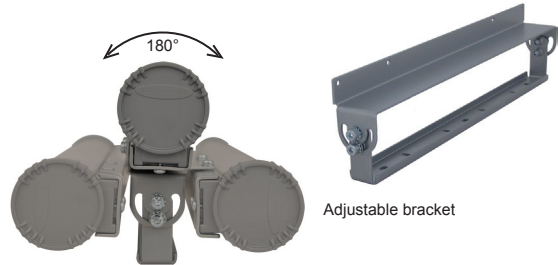
FIX BRACKET
- standard delivery with luminary



End cup
- standard delivery with luminary

AIMING POSSIBILITY

The fixture could be aim to wish position with adjustable bracket.



Adjustable bracket

04 MAINTENANCE

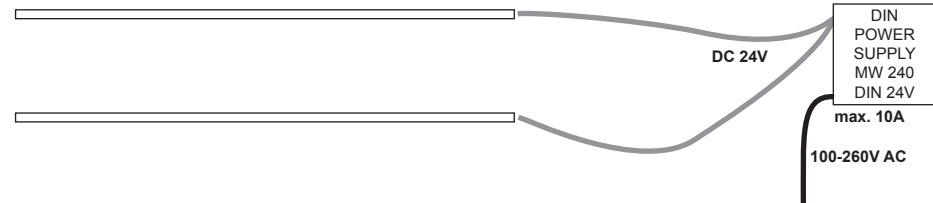
- To tackle all Safety Information- 01!
- Damage caused by inadequate cleaning or maintenance is not covered by warranty.
- Regular cleaning is demand (dust, dirt, ...).



Maintenance policy:

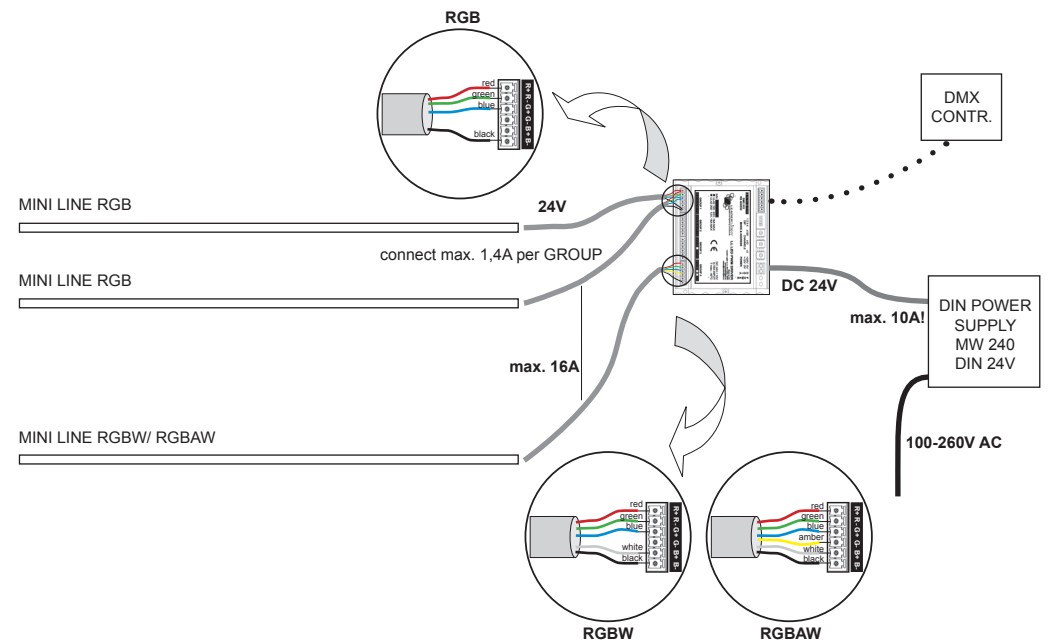
- Unplug mains before maintenance and at least 10 minutes cool off
- Appliance do not illegal open or demount
- Clean-up dust only from outer surface (for ex. diffuser).
- Use vacuum or dumpy duster (warm water)
- Before reinstalling to check failure-free state – no wet parts!

LL ARC MINI LINE connecting to DIN POWER SUPPLY enables to switch ON/OFF luminaries.



1.1

LL ARC MINI LINE connecting to PWM DRIVER and DIN POWER SUPPLY enables to switch ON/OFF luminaries and in addition intensity and colour control by DMX controller.



1.2