

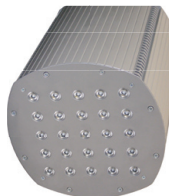


LEADER LIGHT s.r.o.  
M.Gorkeho 33  
052 01 Spisska Nova Ves  
Slovakia  
www.leaderlight.eu

# LEADER LIGHT

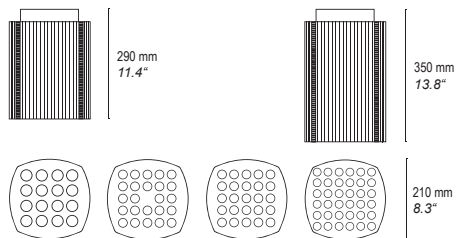
## USER MANUAL

### LL HBDW PS21-NA-I20 ...



#### COMPLIMENTS ON YOUR PURCHASE!

##### Dimensions



#### Package includes:

- LL HBDW PS21-NA-I20 with adjustable bracket 1pc.
- User manual 1pc.

#### Additional items needed:

- Mounting accessories as necessary

#### Content:

#### 01 SAFETY INFORMATION

- 01.1 Risk of eyes damage
- 01.2 Safety instructions
- 01.3 Fire protection

#### 02 PRODUCT SPECIFICATION

- 02.1 Technical specification
- 02.2 Product description

#### 03 INSTALLATION

- 03.1 Unpacking
- 03.2 Physical installation
- 03.3 Connection

#### 04 MAINTENANCE AND SERVICE

#### ENVIRONMENTAL PROTECTION

Do not throw away the appliance with the normal household waste at the end of its life, but hand it in at an official collection point for recycling. By doing this, you help to preserve the environment.



#### 01 SAFETY INFORMATION



##### WARNING!!!

Carefully read before installing, powering or servicing. Nothing to do if anything misunderstand! Installation can be done only by a qualified professional in accordance with relevant local codes.

##### 01.1 Risk of eyes damage

- Do not look directly into LED lamps.
- Do not look into light beam from a distance of less than 40 cm (16 inches)!



##### 01.2 Safety instructions

- Shut down power before installation or maintenance.
- Do not modify, alter, or attempt to service the LEADER LIGHT appliance. Doing so will void the warranty.
- Appliance and recommended AC power supply must be installed by a qualified professional in accordance with relevant local codes. Use only acceptable source of AC power and frequency that complies with local building and electrical codes.
- Use only the recommended voltage source.
- Appliance always connect to earth (eltech.)!
- Do not use or do not connect the products if the power cable, power plug or fixtures are any way damaged, wet, or if they are overheating.
- Before removing or installing any cover or part of appliance disconnect it from AC power.
- AC power supply must be protected against overvoltage and short circuits.



##### 01.3 Fire protection

- Follow all safety restrictions.
- Thermostatic switches or fuses never to bypass.
- **Device and ventilating slots never shield.** Around the axis of the fitting (180°) must be maintained space for cooling. Minimum distance from the surrounding objects must be 100mm (4 in.).
- LEDs never direct cover with filters or other materials.
- Allowing max. ambient temperature is 40°C (104°F).
- Luminaries never use without mounting brackets. The housing never install directly to the surface.



Non-minimum distance and / or non-use the original brackets is at your own risk!

#### 02 PRODUCT SPECIFICATION

##### 02.1 Technical specification

**Power connection:** 90-264V AC 47-63Hz In PowerCon connector

**LED lifetime:** 75.000 hours (70% lumen maintenance at  $T_a=25^{\circ}\text{C}$ )

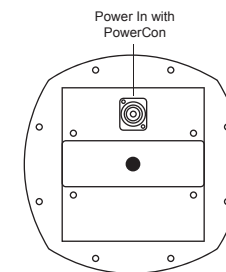
**IP:** Indoor IP20

**Ambient temp. (Ta):** max. +40°C

**Cooling** Conventional

**Installation:** Surface / suspended mounting with adjustable bracket

#### 02.2 Product description



#### 03 INSTALLATION

##### 03.1 Unpacking

- Unpack carefully.
- This is electronic equipment and should be handled carefully.
- Damaged delivered package or if are any mechanical parts broken – it must be claim immediately by the transport company. Photo pictures as evidence are valuable for future claim.

##### 03.2 Physical installation

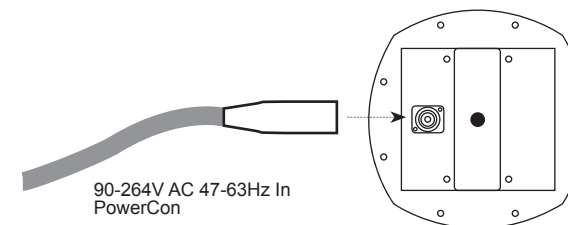
- Loading capacity of bearing area has to be at least 10 times the weight of all device clusters.
- Hairbreadth from combustibile materials is 0,5m.

##### 03.3 Connection

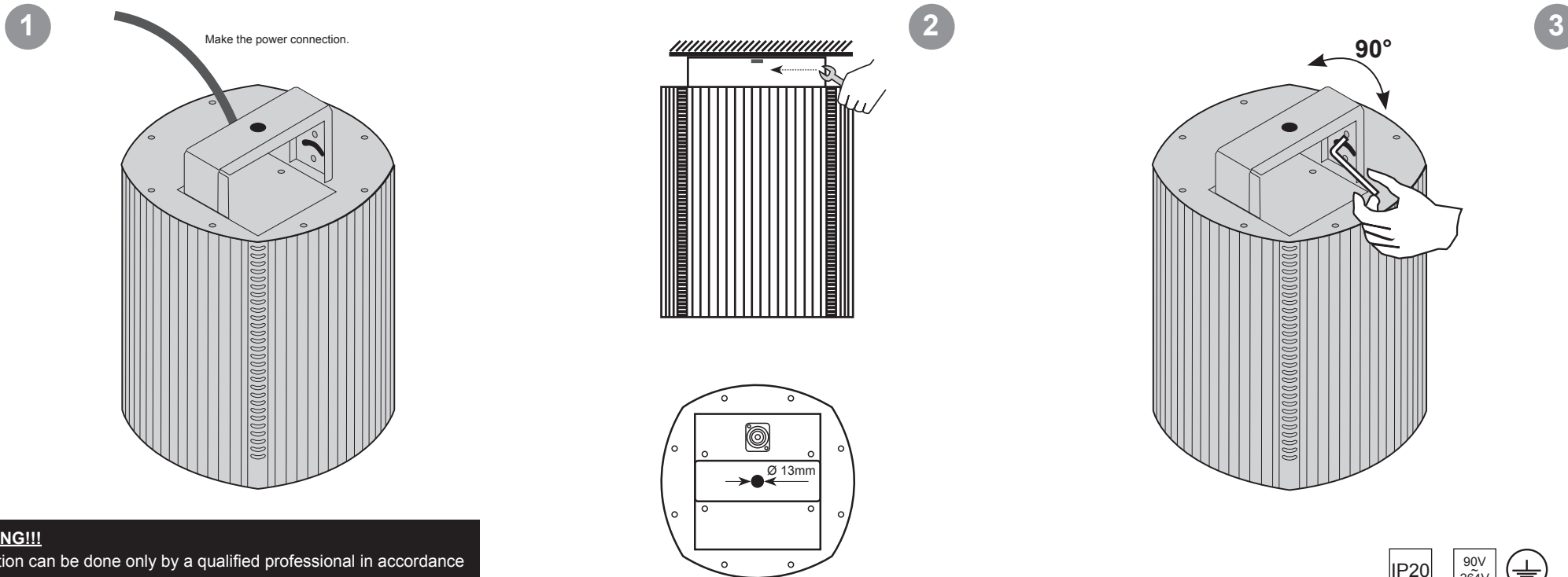
- Respect all SAFETY INFORMATION 01!
- Connect the ground (earth) !
- It is not necessary to open the fixture before power supply ! Power supply is solved simple with PowerCon connector.
- The fixture is equipped with auto-switching power supply that automatically adjusts to any 47-63Hz AC power source from 90-264V.
- Cord plug connections:



Symbol	Pin	Wire Colour	Screw (US)
L	live	brown	yellow or brass
N	neutral	blue	silver
	ground (earth)	yellow/green	green



## 1. Mechanical mounting of LL HBDW PS21-NA-I20

**WARNING!!!**

Installation can be done only by a qualified professional in accordance with relevant local codes.

## BASIC RANGE

LL HIGH BAY DOWNLIGHT	Weight	
LL HBDW PS21-NA-I20-16-60W-056-45K-C80	4,10 kg	9lbs
LL HBDW PS21-NA-I20-24-75W-056-45K-C80	4,10 kg	9lbs
LL HBDW PS21-NA-I20-25-75W-056-45K-C80	4,10 kg	9lbs
LL HBDW PS21-NA-I20-36-100W-056-45K-C80	4,40 kg	9,7lbs

## 04 MAINTENANCE AND SERVICE



- Before any maintenance is necessary to carefully read all **SAFETY INFORMATION 01!**
- Damages caused by inadequate cleaning or maintenance are not covered by warranty.
- Requires periodic cleaning (dust, dirt ,...)

**Procedure for maintenance:**

- Unplug mains before maintenance and at least 10 minutes cool off.
- Appliance do not illegal open or demount. Clean-up dust only from outer surface. Use vacuum or dumpy duster (warm water)
- Before reinstalling make sure everything is intact and dry– no wet parts!

**Service:**

- Customer service provided by the manufacturer.