

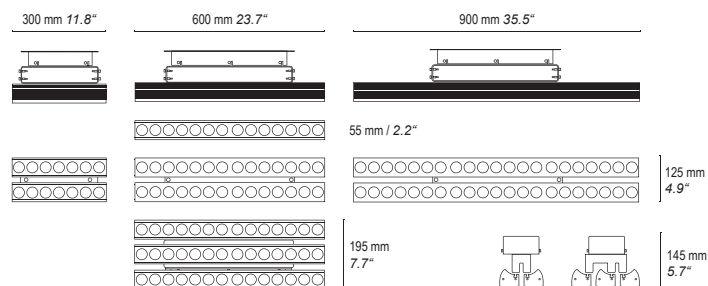


LEADER LIGHT

LL HB P... LL HIGH BAY P

COMPLIMENTS ON YOUR PURCHASE!

Dimensions



Package includes:

- LL HB P... with bracket
- User manual

1pc.
1pc.

Additional items needed:

- National socket
- Mounting accessories as necessary

Content:

- 01 SAFETY INFORMATION**
 - 01.1 Risk of eyes damage
 - 01.2 Safety instructions
 - 01.3 Fire protection
- 02 PRODUCT SPECIFICATION**
 - 02.1 Technical specification
 - 02.2 Product description
- 03 INSTALLATION**
 - 03.1 Unpacking
 - 03.2 Physical installation
 - 03.3 Connection
- 04 MAINTENANCE AND SERVICE**

ENVIRONMENTAL PROTECTION

Do not throw away the appliance with the normal household waste at the end of its life, but hand it in at an official collection point for recycling. By doing this, you help to preserve the environment.



LEADER LIGHT s.r.o.
M.Gorkeho 33
052 01 Spisska Nova Ves
Slovakia
www.leaderlight.eu

USER MANUAL



01 SAFETY INFORMATION



WARNING!!!

Carefully read before installing, powering or servicing. Nothing to do if anything misunderstand! Installation can be done only by a qualified professional in accordance with relevant local codes.

01.1 Risk of eyes damage

- Do not look directly into LED lamps.
- Do not look into light beam from a distance of less than 40 cm (16 inches)!



01.2 Safety instructions

- Shut down power before installation or maintenance.
- Do not modify, alter, or attempt to service the LEADER LIGHT appliance. Doing so will void the warranty.
- Appliance and recommended AC power supply must be installed by a qualified professional in accordance with relevant local codes. Use only acceptable source of AC power and frequency that complies with local building and electrical codes.
- Use only the recommended voltage source.
- Appliance always connect to earth (eltech.)!
- Do not use or do not connect the products if the power cable, power plug or fixtures are any way damaged, wet, or if they are overheating.
- Before removing or installing any cover or part of appliance disconnect it from AC power.
- AC power supply must be protected against overvoltage and short circuits.



01.3 Fire protection

- Follow all safety restrictions.
- Thermostatic switches or fuses never to bypass.
- Device and ventilating slots never shield. Around the axis of the fitting (180°) must be maintained space for cooling. Minimum distance from the surrounding objects must be 100mm (4 in.).
- LEDs never direct cover with filters or other materials.
- Allowing max. ambient temperature is 40°C (104°F).
- Luminaries never use without mounting brackets. The housing never install directly to the surface.



Non-minimum distance and / or non-use the original brackets is at your own risk!

02 PRODUCT SPECIFICATION

02.1 Technical specification

Power connection: AC90-264V, 47-63Hz cable input 1m long
setup time 1200ms, cold start 70A/230VAC

IP: Driver: IP20/IP56; Fixture: IP43/IP65

Ambient temp. (Ta): Indoor: max. +40°C; Optional: +50°C

Installation: Surface / suspended mounting with bracket

02.2 Product description - DRIVER'S

03 INSTALLATION

03.1 Unpacking

- Unpack carefully.
- This is electronic equipment and should be handled carefully.
- Damaged delivered package or if are any mechanical parts broken – it must be claim immediately by the transport company. Photo pictures as evidence are valuable for future claim.

03.2 Physical installation

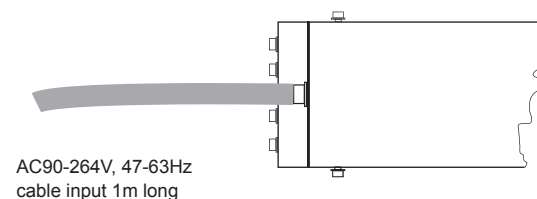
- Loading capacity of bearing area has to be at least 10 times the weight of all device clusters.
- Hairbreadth from combustible materials is 0,5m.

03.3 Connection

- Respect all SAFETY INFORMATION 01!
- Connect the ground (earth) !
- It is not necessary to open the Driver box before power supply ! Power supply is solved simple with 1m cable.
- The fixture is equipped with auto-switching power supply that automatically adjusts to any 47-63Hz AC power source from 90-264V.
- Cord plug connections:



Symbol	Pin	Wire Colour	Screw (US)
L	live	brown	yellow or brass
N	neutral	blue	silver
	ground (earth)	yellow/green	green



AC90-264V, 47-63Hz
cable input 1m long

04 MAINTENANCE AND SERVICE



- Before any maintenance is necessary to carefully read all **SAFETY INFORMATION 01!**
- Damages caused by inadequate cleaning or maintenance are not covered by warranty.
- Requires periodic cleaning (dust, dirt ,...)

Procedure for maintenance:

- Unplug mains before maintenance and at least 10 minutes cool off.
- Appliance do not illegal open or demount.
- Clean-up dust only from outer surface. Use vacuum or dumpy duster (warm water)
- Before reinstalling make sure everything is intact and dry– no wet parts!

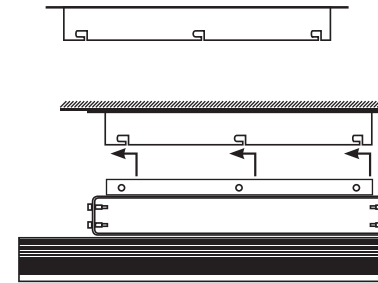
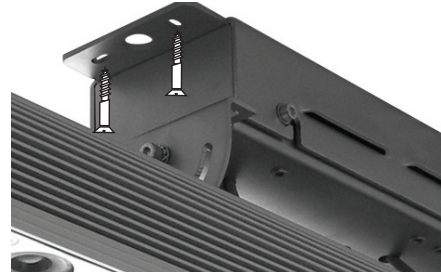
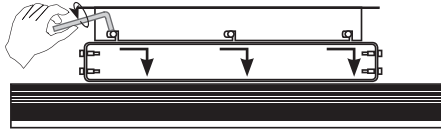
Service:

- Customer service provided by the manufacturer.

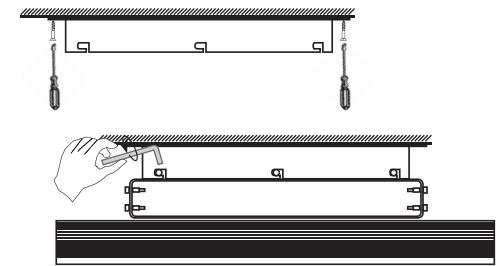
1. Mechanical mounting of LL HB P

Mounting on surface:

1.1 Remove the Driver cover with the Allen key.



1.2. Screw the cover to the surface with 4xM10.



1.3. The Driver with the fixture fix to the cover and apply the screws with Allen key.

IP20

IP56

90V
264V



PENDING



LL HIGH BAY switching driver On/Off	Weight	
LL HB P160-NA-I20-14-60W-056-45K-C80	2,50 kg	5,5lbs
LL HB P230-NA-I20-14-60W-056-45K-C80	2,50 kg	5,5lbs
LL HB P260-NA-I20-28-120W-056-45K-C80	4,80 kg	10,6lbs
LL HB P290-NA-I20-42-180W-056-45K-C80	6,80 kg	15lbs
LL HB P360-NA-I20-42-180W-056-45K-C80	6,80 kg	15lbs
LL HB P360-NA-I20-48-180W-056-45K-C80	6,80 kg	15lbs

LL	HB	P160	NA	I20	14	60W	056	45K	C80	
	Type	Connection	Dimension	Product color	IP rating	LED number	Power input	Optic	Color temperature	CRI
	HB: High Bay	D: AC90-264V, 47-63Hz; DC127-370V; DMX; setup time 1200ms, cold start 70A/230VAC	1: Modul number 2x modul 3x modul 60: Lenght 600mm 600 300, 600, 900 600	NA: Natural anodized BA: aluminium Black anodized aluminium	I20: Indoor IP20 O56: Outdoor IP56	07: 7x LED 08: 8x LED 14: 14x LED 16: 16x LED 28: 28x LED 32: 32x LED 42: 42x LED 48: 48x LED	60W ... 180W	014: 14° 028: 28° 040: 40° 056: 56° E1445: Elliptical 14°x 45°	30K: 3000K 35K: 3500K 40K: 4000K 45K: 4500K 56K: 5600K	C80: CRI 80 C75: CRI 75 C90: CRI 90 option for 3000K